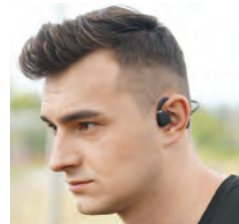
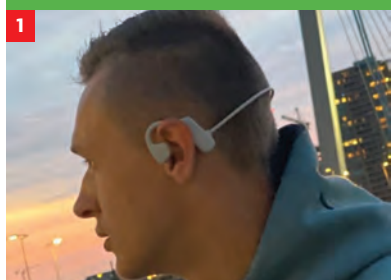


AXIWI[®] SPORT 250 OPEN EAR HEADSET



USER'S GUIDE



HOW TO WEAR

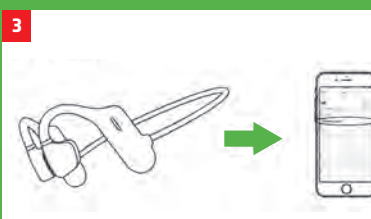
Place the headset over your ears as shown.



Hold for 3s

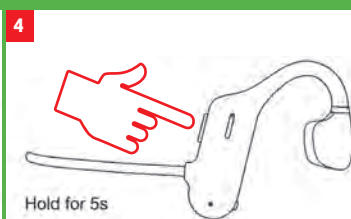
POWER ON

Press the power button for 3 seconds until the light flashes green and white.



BLUETOOTH CONNECT

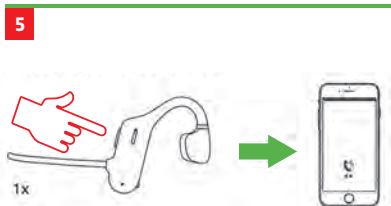
Open your device's bluetooth menu and select "KIWI direct."



Hold for 5s

POWER OFF

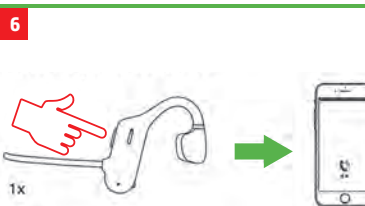
Press and hold the power button for 5 seconds until light dims.



1x

ANSWER CALL

Press the power button 1 time.



1x

END CALL

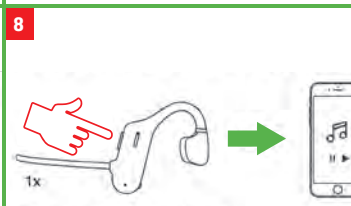
Press the power button 1 time.



2x

REJECT CALL

Press the power button 2 times (double press).



1x

PLAY/PAUSE MUSIC

Press the power button 1 time (when playing music).



3x

ACTIVATE VOICE ASSISTANT

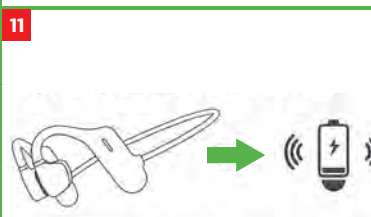
Press the power button 3 times (triple click quickly).



Hold for 25s

RESET

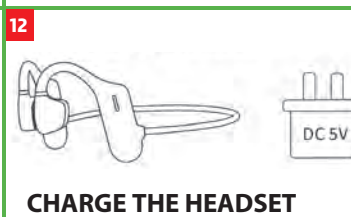
Hold the power button for 25 seconds.



Low Battery

LOW BATTERY

When the battery level is lower than 10%, every 30 seconds there will be 3 short beeps.



CHARGE THE HEADSET

Charge the headset using a DC 5V USB adapter. Adapters higher than DC 5V will cause damage to the headset. The LED will turn from green to white when the charging is complete.

FEATURES:

Model: AXIWI SPORT-250
Type: Open Ear Bluetooth
BT Version: 5.0 EDR
Frequency: 20HZ- 20kHz
Conn. Distance: 10-15 meters
Mic. Sensitivity: -42 dB
Battery: 120 mAh
Play time: 5 Hours (80% volume)
Call time: 6 Hours
Standby time: 300 Hours
Charging time: 1.5 Hours (not more than DV 5V)

ATTENTIONS:

1. Listening to loud music for a long period of time can cause discomfort. Please use medium volume if possible.
 2. Using a headset will effect your perception of the surroundings. Pay attention when using a headset.
 3. Do not modify the headset. They may cause damage.
 4. Do not immerse the headset under water.
 5. Keep the headset away from fire, hydration and high presser equipment.
 6. Not suitable for children under 3 years old. Contains small parts.
 7. Do not classify it as household waste. Please send to your local electrical recycling station.
- NOTE: The company does not assume any responsibility for the loss of personal property by the violation of the above attention.



Global Archery - Authorized North American Distributor
101 Archery Way • Ashley, IN 46705 • 260.587.4500

GlobalArchery.com/AXIWI